

## BOXsolo – our IP67 water-resistant tracking device with long-life battery

In today's challenging economic climate, it is critically important for businesses of all types to reduce operational costs, improve efficiency and to protect their valuable assets.

**BOXsolo** is our water-resistant and durable tracking device which is designed specifically for tracking assets and equipment that may be left unattended for long periods of time and may be exposed to harsh conditions. It is a highly configurable device that is **designed and manufactured in the UK**. **BOXsolo** offers a unique combination of long battery life, functionality, reliability and quality – at a very competitive price.

**BOXsolo** is perfect for tracking and monitoring:

- Trailers
- Plant Equipment
- Agricultural Equipment
- Boats
- Caravans

How **BOXsolo** works:

- It will wake periodically to send its location to reassure you that your equipment is exactly where you left it.
- Whenever there is movement, the accelerometer allows **BOXsolo** to wake up and give you minute-by-minute tracking.
- If there is no movement for 5 minutes, **BOXsolo** will go to sleep.

Some of the important features are:



### Long Life Battery

Allows **BOXsolo** to provide a daily location report for over 18 months.

- Ideal for assets that are on site or on hire for long periods of time – you can be sure that your valuable equipment is exactly where you left it.
- When in live tracking mode, **BOXsolo** will track an average vehicle for up to 1 month.

### Accelerometer / Motion Sensor

The highly sensitive, 3-axis accelerometer allows **BOXsolo** to:

- Alert you to any unauthorised movements of your vehicles / equipment
- If your vehicle / equipment is moved – even with the engine off – **BOXsolo** will alert you and track the journey.

### Durable IP67 Casing

**BOXsolo** is vibration tested and has an IP67 water-resistant, dustproof and ruggedised casing.

- Makes the unit ideal for use on assets that are exposed to the elements.
- Perfect for plant and agricultural equipment which vibrate heavily.

### Internal Antennas with excellent GPS performance

- Internal GPS and GSM antennas mean that covert installation on the exterior of equipment is possible.
- Powerful GPS performance means that **BOXsolo** works perfectly underneath a trailer.

Tranex Telecommunications Ltd, Telecom House, 29 High Street, Rothwell, Northamptonshire, NN14 6AD

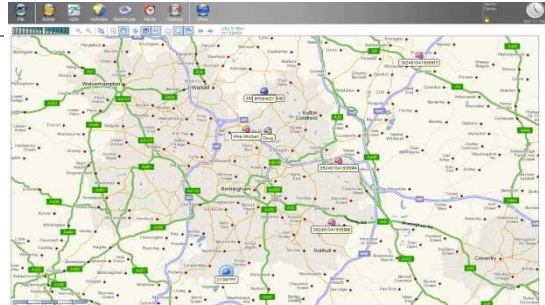
Call us on: 01536 711028      [www.tranex.co.uk](http://www.tranex.co.uk)

## Features and Benefits

### Detailed and accurate tracking with Up-to-date Mapping

Minute-by-minute tracking of any journeys undertaken by your trailers / assets. We give you location, speed, driving time and distance travelled.

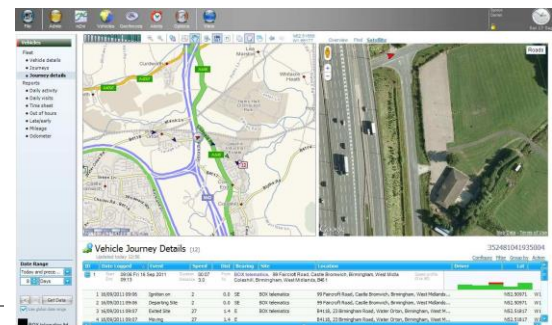
- You now know where ALL of your mobile assets are at all times.
- Allocate the nearest driver to the job.
- Confirm and corroborate mileage claims
- Switch between ultra-accurate street-level mapping and satellite maps with one click.
- Access Google Street View with the touch of a button.



### Increased Safety & Security

Our solution provides:

- **Speeding alerts** – be aware of aggressive drivers
- **Out of hours’ movement**– receive an alert if your hire equipment is being used when it shouldn’t.
- **Tow-away detection** – if your equipment is lifted onto a lorry and stolen, you will be alerted and BOXsolo will track the journey
- **Geofence Exit** – if your asset has left your yard or site, you will receive an alert



### Improved Asset Utilisation

Our solution lets you know exactly where, when and how your plant or trailers have been used. We give you:

- mileage
- running hours
- accurate location

This allows you to improve the efficiency of your operations and increase the utilisation of your valuable equipment.

- You can now **“do more, with less”**.
- You may be able to reduce the size of your fleet, **saving you £1,000’s**



### Reduce Fuel Use and Reduce Carbon Footprint

- With complete visibility of your assets, you can now monitor unauthorised and unnecessary journeys thereby reducing mileage and therefore fuel.
- Now you know where they are, you can reduce mileage and fuel by sending the nearest tractor to pick up empty trailers.
- **Reduced fuel usage = a smaller Carbon Footprint**

### Reduced Administration and Improve Customer Service

You now know where ALL of your trailers and mobile assets are:

- Instead of hoping that your equipment is where you left it, just look on the map!
- By knowing where your equipment is, you can select the right asset for the particular job.
- If you are hauling goods or delivering plant hire equipment, you can now proactively provide an ETA to your customers, before they call you!

Start Time	End Time	Distance	Speed	Location
08:00:00	08:05:00	1.50	10.0	52 TOTTEN ROAD, NORTH BRISTOL, BRISTOL
08:05:00	08:10:00	1.50	10.0	52 TOTTEN ROAD, NORTH BRISTOL, BRISTOL
08:10:00	08:15:00	1.50	10.0	52 TOTTEN ROAD, NORTH BRISTOL, BRISTOL
08:15:00	08:20:00	1.50	10.0	52 TOTTEN ROAD, NORTH BRISTOL, BRISTOL
08:20:00	08:25:00	1.50	10.0	52 TOTTEN ROAD, NORTH BRISTOL, BRISTOL

To find out more about **BOXsolo** and all of our other products, contact us on the details below.

Tranex Telecommunications Ltd, Telecom House, 29 High Street, Rothwell, Northamptonshire, NN14 6AD

Call us on: 01536 711028      www.tranex.co.uk